



Coverland



**undertile**  
**membrane**

*Moisture, wind and dust barrier*



Coverland Undertile Membrane is a fundamental element of a roof structure and is a reliable alternative to plastic underlays. It provides superior wind uplift strength which prevents the uplift of roof coverings during strong wind gusts. It offers protection against water ingress and dust invasion. Your assurance of a weather-tight roof!

**ROOFS THAT LAST**

# UNDERTILE MEMBRANE

*Protection from above*

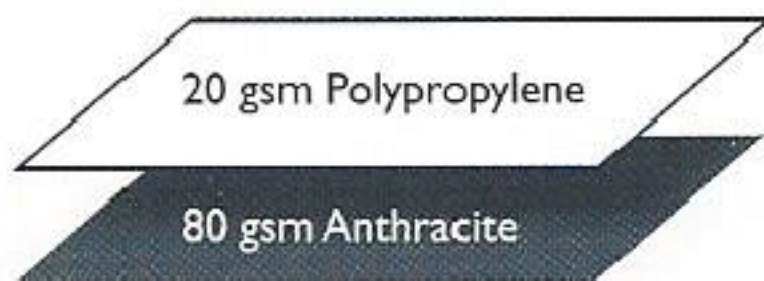
*Gusting winds can cause unsecured roof tiles to be lifted or even blown from the roof. If the tiles have not been properly secured and no undertile membrane laid in the roof structure it may result in damage to both the exterior and interior of the roof.*

- Wind tunnel tests and practical evidence show that the satisfactory performance of a roof depends on the complementary function of the roof covering and the Undertile Membrane.
- When a roof structure is tiled according to the required specifications and suitably fitted with Coverland Undertile Membrane, it performs as a weather-tight roof.

## MATERIAL COMPOSITION



3-PLY UNDERTILE MEMBRANE



2-PLY UNDERTILE MEMBRANE

## PRODUCT DATA 3-Ply

Material	3-ply laminate of 50g/m <sup>2</sup> blue, 20g/m <sup>2</sup> Polypropylene, 30g/m <sup>2</sup> Anthracite
Tensile Strength	200 Newtons
Grammage	100g.m <sup>2</sup>
Length of Roll	30m
Width of Roll	1.5m
Weight	5.1kg per roll
Coverage	40.5m <sup>2</sup> with an overlap of 150mm

## PRODUCT DATA 2-Ply

Material	2-ply laminate of 80g/m <sup>2</sup> white or black, 20g/m <sup>2</sup> Polypropylene	
Tensile Strength	180 Newtons	
Grammage	100g.m <sup>2</sup>	
Length of Roll	30m	45m
Width of Roll	1.5m	1.5m
Weight	5.1kg per roll	7.8kg per roll
Coverage	*40.5m <sup>2</sup> * with an overlap of 150mm	*60.75m <sup>2</sup>



DUST PROOF



SUPERIOR WIND UPLIFT STRENGTH



PERFORMANCE



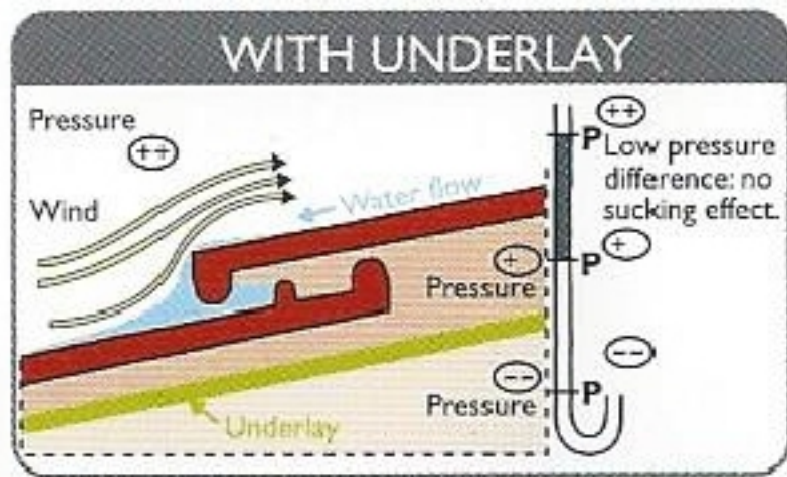
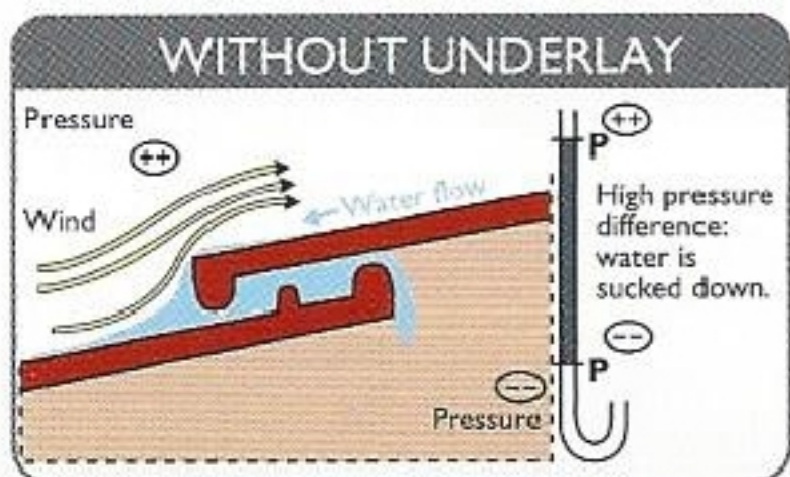
VAPOUR IMPERMEABLE

## BENEFITS

- ✓ Protection against roof leaks, water ingress & roof damage
- ✓ Prevents the uplift of roof coverings during strong wind gusts
- ✓ Barrier against dust invasion

### Increased water-tightness

- Water can enter the roof space and damage the roof interior in the following ways:
  - In windy conditions, a high pressure difference between the roof space and outside the roof tiles causes water suction. Without the Coverland Undertile Membrane as a barrier, water is sucked down into the lower pressure roof space;
  - In the event of damage to the tile or other roof covering;
  - Hailstones that melt in valleys, or concealed gutters can leak into the roof space
- Coverland Undertile Membrane is water impermeable and does not allow water through.



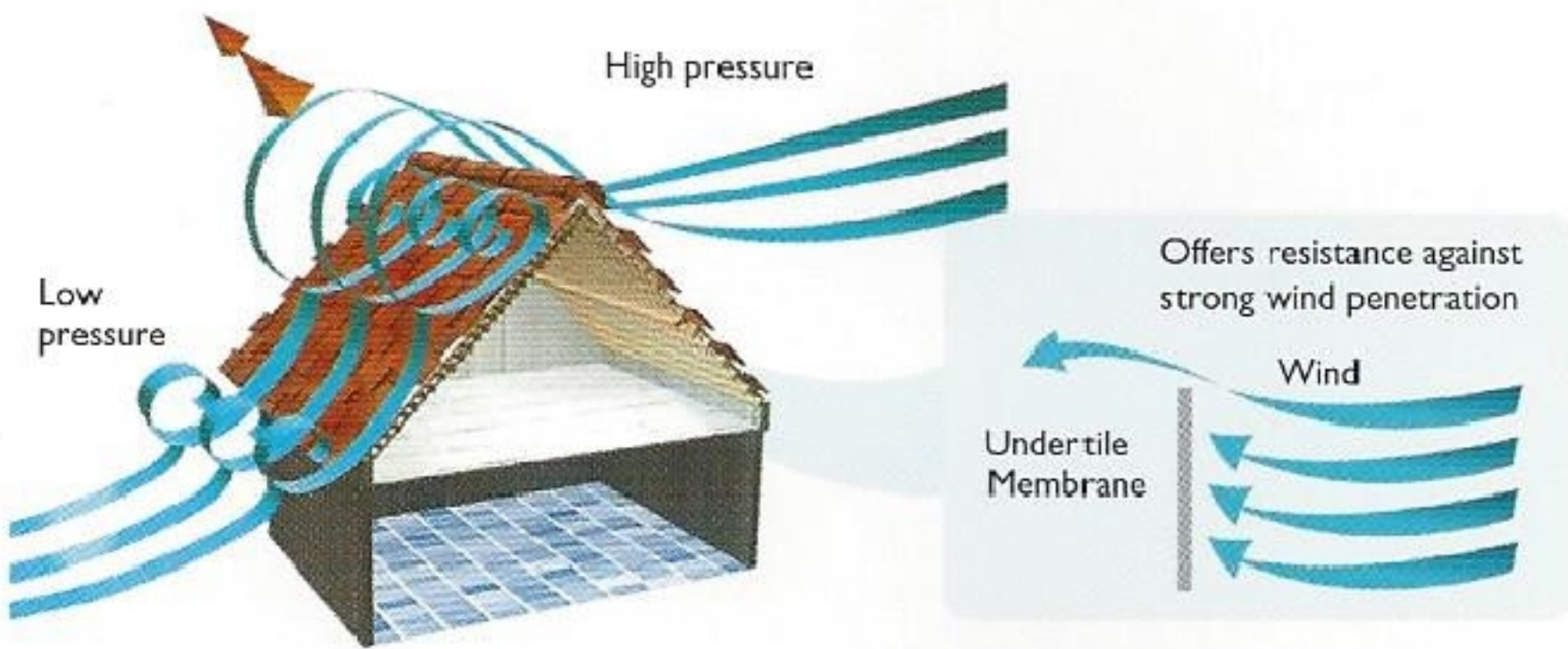
## UNDERTILE MEMBRANE SAMPLE 3-Ply





### Superior wind uplift strength

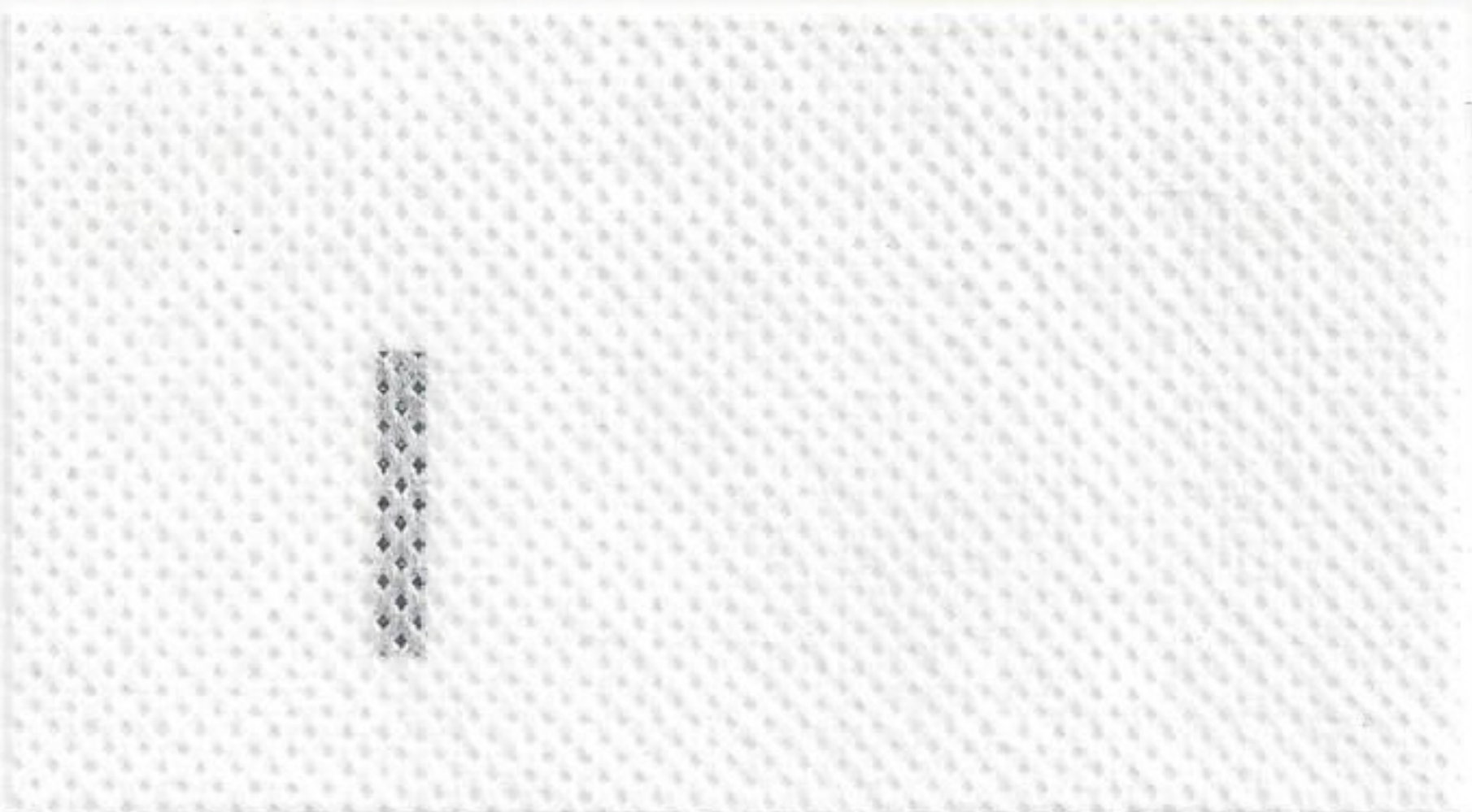
- During short wind gusts, pressure differences occur between the roof space and the outside roof tiles. The result is a wind force that causes total or partial removal of the roof tiles allowing further damage by natural elements.
- Coverland Undertile Membrane fitted underneath the tiles, assists in equalising pressure differences, it thereby offers resistance against strong wind penetration.



### Enhanced protection

- Coverland Undertile Membrane prevents dust, sand, pollen and insects accumulating in the roof cavity and penetrating the interior of the house or building.

## UNDERTILE MEMBRANE SAMPLE 2-PLY





# undertile membrane

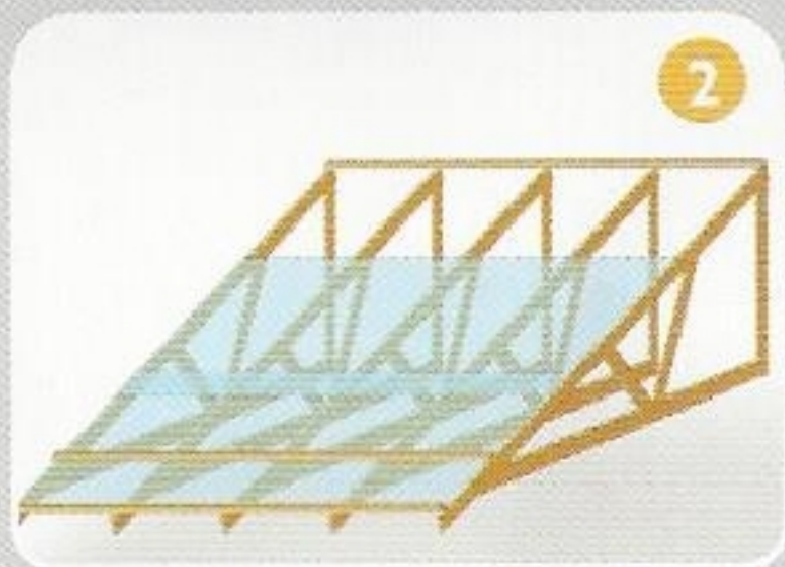
Moisture, wind and dust barrier



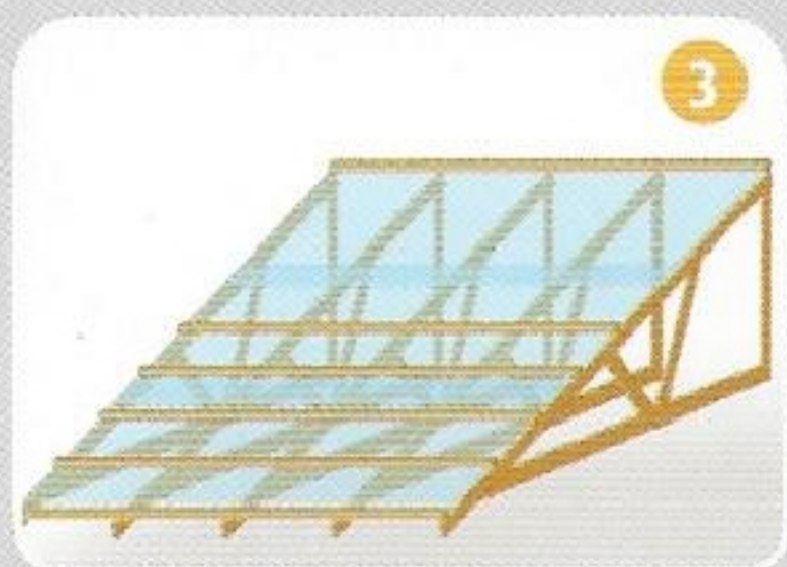
## INSTALLATION:



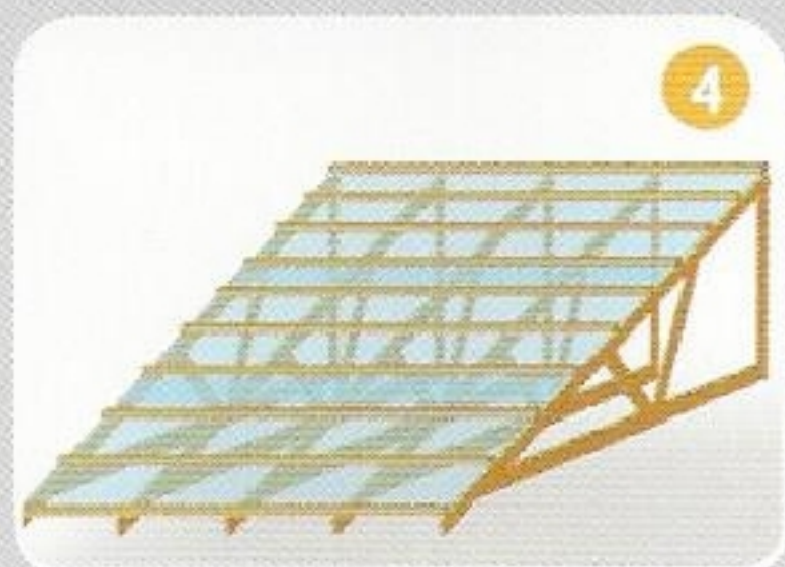
- Lay undertile membrane horizontally across rafters starting at the eaves and work up to pitch of roof.
- Fix membrane to middle of rafters using clout nails.



- Lay next undertile membrane layer parallel to first layer. Allow 150mm overlap.



- Always allow a minimum of 150mm overlap of top undertile membrane layer over the lower layer.



- Finally fix tiling battens over underlay.



## RECOMMENDED ROOF COMPONENTS



### RadenShield™

- Reflective aluminium membrane reflects 97% radiant heat.
- Reduces indoor temperature by up to 10°C.
- Reduces electricity usage by saving on heating/cooling costs.



### Compact Roll

- Ventilated dry fix roll for roof ridges & hips
- High ventilation value and waterproof
- Used in place of mortar



### EasyFlash

- High stretch, self-adhesive roof abutment seal.
- All weather durability for up to 15 years.
- Maintenance-free.